



**SC**  
**SHEARCORE™**

***FORTRESS™***  
**BY *SHEARCORE™***

**THE NEW WORLD STANDARD**





# FORTRESS™

# FS



**Made in the USA**



**Family Founded, Privately Owned**

What sets Fortress apart? In a word: **POWER.**

ShearCore combines hydraulic and geometric excellence to produce a shear that is  
**unmatched in real-world performance.**

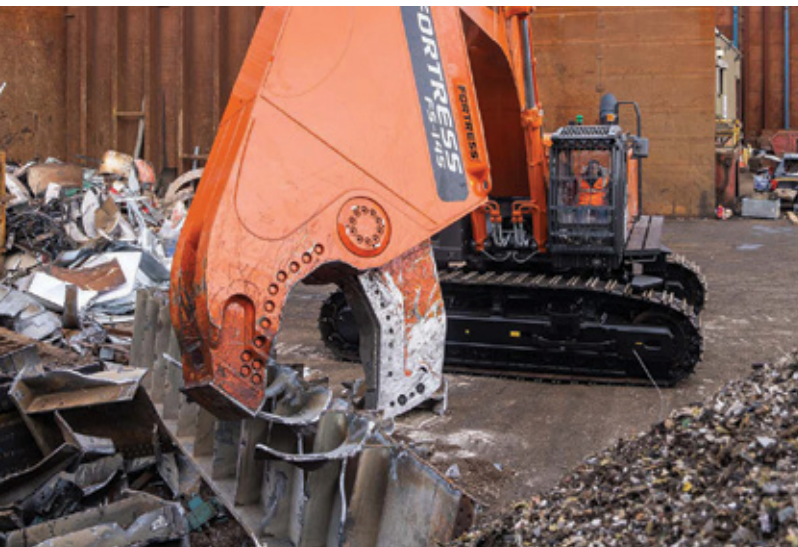
## **FORTRESS™** Shear Specifications

Model	Approx. Shear Weight (kg.)	Jaw Opening (mm.)	Jaw Depth (mm.)	Reach (mm.)	Minimum Excavator Boom Mount (ton)	Minimum Excavator Stick Mount (ton)
FS25R	2,676	584	483	2,642	14	20
FS35R	3,266	660	584	2,870	18	30
FS45R	5,080	711	711	3,251	23	41
FS55R	5,897	762	762	3,556	26	50
FS75R	7,121	813	813	3,658	34	58
FS85R	7,938	889	965	4,064	37	75
FS95R	9,798	991	1,067	4,140	48	84
FS145R	12,973	1,092	1,168	4,369	66	113
FS175R	Contact Us					
FS245R	22,952	1,219	1,321	5,232	Contact us	Contact us

Models listed are rotating shears. Non-rotating models are available in FS45-FS245. Weights may vary depending on configuration options. FS25-FS35 listed weight is typical 3rd member universal. FS45-FS245 listed weight is typical 2nd member universal mount.



# MOBILE SHEARS



**Structurally Superior**



**Unmatched Power to Weight**

More power requires more strength and rigidity. Our unique manufacturing capabilities allow us to utilize **6" high-yield plate** and use fewer overall components.

Fewer components mean less welds creating a **structurally superior shear**.

Two piece bolt-on  
piercing tip

Unmatched power  
at the tip

Massive solid shaft pivot  
group boosts performance  
and durability

Upper and lower are  
milled from 6" high  
yield plate steel

Razor blade that spans the  
outside of the guide blades,  
allowing easier shimming

Machined weld seams provide  
superior fitment between lower jaw  
and stick body, improving strength

All hydraulic circuits are duty  
cycle tested to typical operating  
pressures and flow prior to delivery







# FORTRESS™

# FC



**Made in the USA**



**Family Founded, Privately Owned**

## PRIMARY DEMOLITION REDEFINED

The Fortress FC is a new class of tool with unique construction and capabilities.

The FC line utilizes a solid upper with no welds and press-fit pivot group (like our shears) allowing for tolerances tight enough to shear rebar all the way out to the tip.

### Concrete Processor Specifications

Model	Approx. Attachment Weight (kg.)	Jaw Opening (mm.)	Jaw Depth (mm.)	Reach (mm.)	Minimum Excavator 2nd Member Mount (Metric Tons)	Minimum Excavator 3rd Member Mount (Metric Tons)
FC25	2,767	813	772	2,235	14	20
FC35	3,946	1,067	960	2,845	18	30
FC45	4,627	1,336	1,105	3,146	27	41
FC95	9,525	1,651	1,626	4,140	47	84

Weights may vary depending on configuration options. Listed weight is flat top without bracket.



## OILQUICK®

OilQuick Americas is a manufacturing partner. All Fortress shears and processors can be fitted with an OilQuick Automatic Quick Coupler System



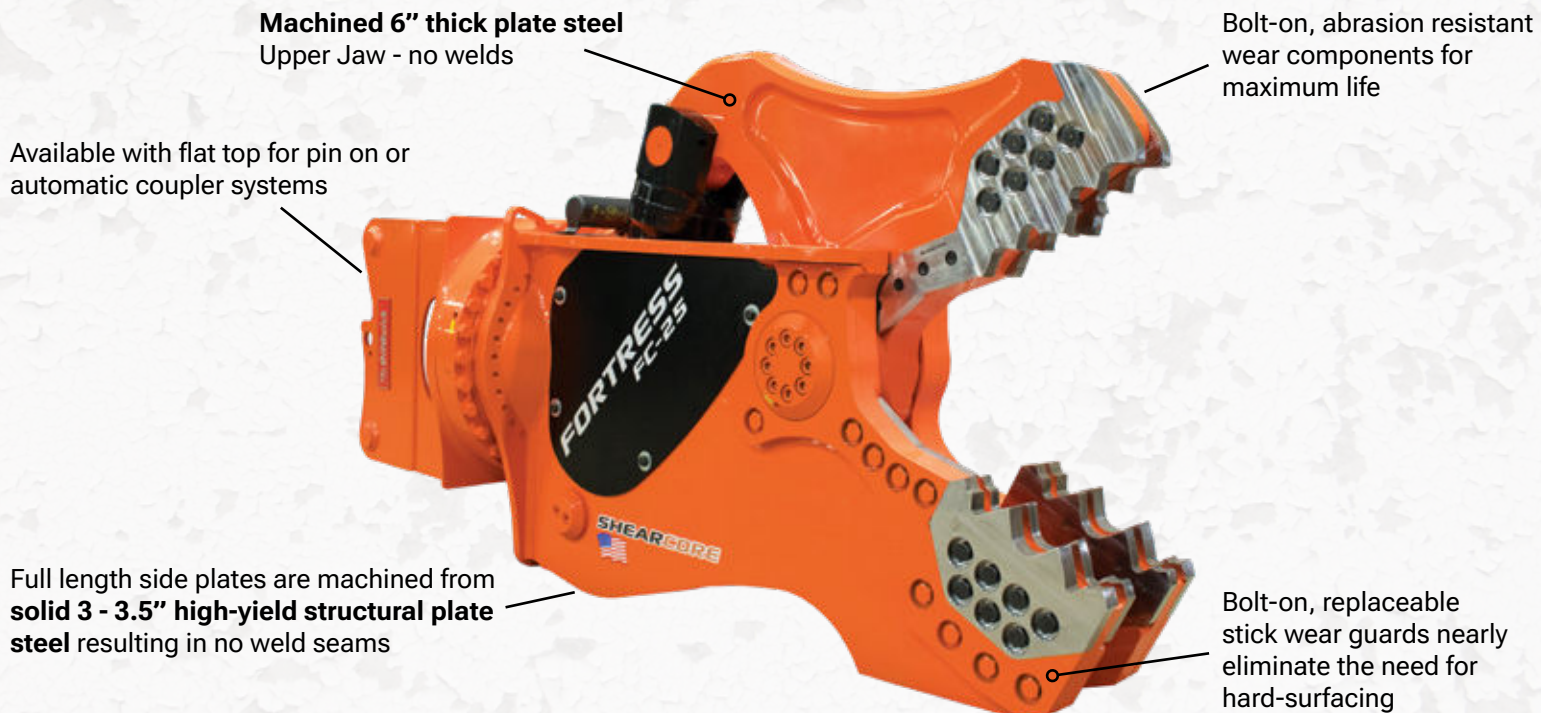
# CONCRETE PROCESSOR



**Structurally Superior**



**Unmatched Power to Weight**







# MANUFACTURED IN SUPERIOR, WISCONSIN



**All Fortress shears are manufactured  
in Superior, Wisconsin, USA.**

**We're proud of that!**

Our cutting-edge factory on Lake Superior's western tip boasts advanced manufacturing equipment, robotic welding stations, CNC machining centers, press brake, burn table, cut-off saw, and a comprehensive parts department. We also have a rebuild center and a skilled manufacturing team.

Our approach to Fortress design is straight forward: **maximize power and durability**. Leveraging our strong engineering and manufacturing expertise, we've developed attachments that are both more powerful and structurally robust.

Fortress has swiftly become the global standard in demolition and scrap recycling attachments. We're proud to be known for our innovative design, world-class engineering, and top-notch manufacturing.

## Service

When you choose a Fortress attachment, you join the Fortress Family, where **exceptional service is our hallmark**. Our dedicated service team takes pride in providing top-tier support.

Our team of skilled Fortress field technicians is readily available to offer on-site technical support and training as needed. We're here to ensure your equipment operates at its best.

For swift responses to your installation, service, and parts requirements, our factory support team is always just a call or an email away.

**1-715-395-5810**

**[Service@ShearCore.com](mailto:Service@ShearCore.com)**







**BLADECORE™**

**SHEAR BLADES  
MADE TO WORK**

**Premium quality replacement blades for mobile and stationary shears.**

## **Experience Matters**

We have extensive expertise in the demolition and recycling industries and use that experience to design premium replacement blades that offer extended blade life, increased flexibility, and reduced cracking.

BladeCore provides blade kits, bolts, and shim kits for a variety of **mobile shears** including **Genesis®**, **Labounty®**, and **Fortress®**.

We also provide blades for **stationary shear** manufacturers such as **Sierra®**, **Copex®**, **Harris®**, **Metso®**, and **Bonfiglioli®**.

*We stand firmly behind the notion that premium quality, paired with superior service and strong relationships, are essential to your **success**.*

**BladeCore.net**

1-715-395-5813

Info@BladeCore.net

155 Main Street, Superior, WI 54480



# **FORTRESS<sup>TM</sup>** **BY SHEARCORE<sup>TM</sup>**

**THE NEW WORLD STANDARD**

**ShearCore.com**

**Sales** +1 (715) 395-3715

**Parts** +1 (715) 395-5811

**Service** +1 (715) 395-5810

155 Main Street Superior, WI 54880 USA



**EXODUS**  
GLOBAL

ShearCore is part of Exodus Global, a family-owned company  
based in Superior, Wisconsin, USA

**BLADECORE<sup>TM</sup>**

**CONNECT<sup>TM</sup>**  
WORK TOOLS

 **OILQUICK<sup>®</sup>**

 **ROCKZONE**  
AMERICAS

**SHEARCORE<sup>TM</sup>**